



GRUPiMAJ

GRITLUX | GRITCON | GRITSOL

2025

Introduction

Let Us **Enlighten** You About Us



Let's begin a lighting journey with Grup İmaj, where light goes beyond the ordinary to create something extraordinary, shaping not just what we see, but what we envision. In the world of outdoor lighting, we lead the way, blending innovation with heritage to brighten every part of our environment. Our journey is marked by brilliance, commitment, and a constant quest for perfection, aiming not just to meet, but to the beat expectations of tomorrow.

Location of...

Head Office



Central hub with management office

New Factory & Laboratory



35,000 m² state-of-the-art facility setting the standard for research and development in lighting technology.



Our Factory

Our 35,000 m² campus, featuring a 9,300 m² production area, is powered by solar panels, reflecting our commitment to sustainable energy. This setup not only supports our high manufacturing capacity but also aligns with our eco-friendly values, allowing us to produce high-quality lighting solutions with minimal environmental impact. We continue to innovate and scale in an energy-efficient, sustainable environment.



Our Production Capacity

With an annual production capacity of 1,000,000 luminaires, our facility stands as a hub of innovation and efficiency. Exporting to over 20 countries, we deliver cutting-edge lighting solutions that illuminate streets, parks, tunnels, and more across the globe. Our commitment to excellence is driven by a strong R&D focus, allowing us to continuously push the boundaries of technology and sustainability. From advanced designs to eco-friendly practices, we're shaping the future of lighting, one luminaire at a time.

 GRITLUX

Opens doors with LED fixtures that illuminate large range from crowded highways to quiet tunnels.

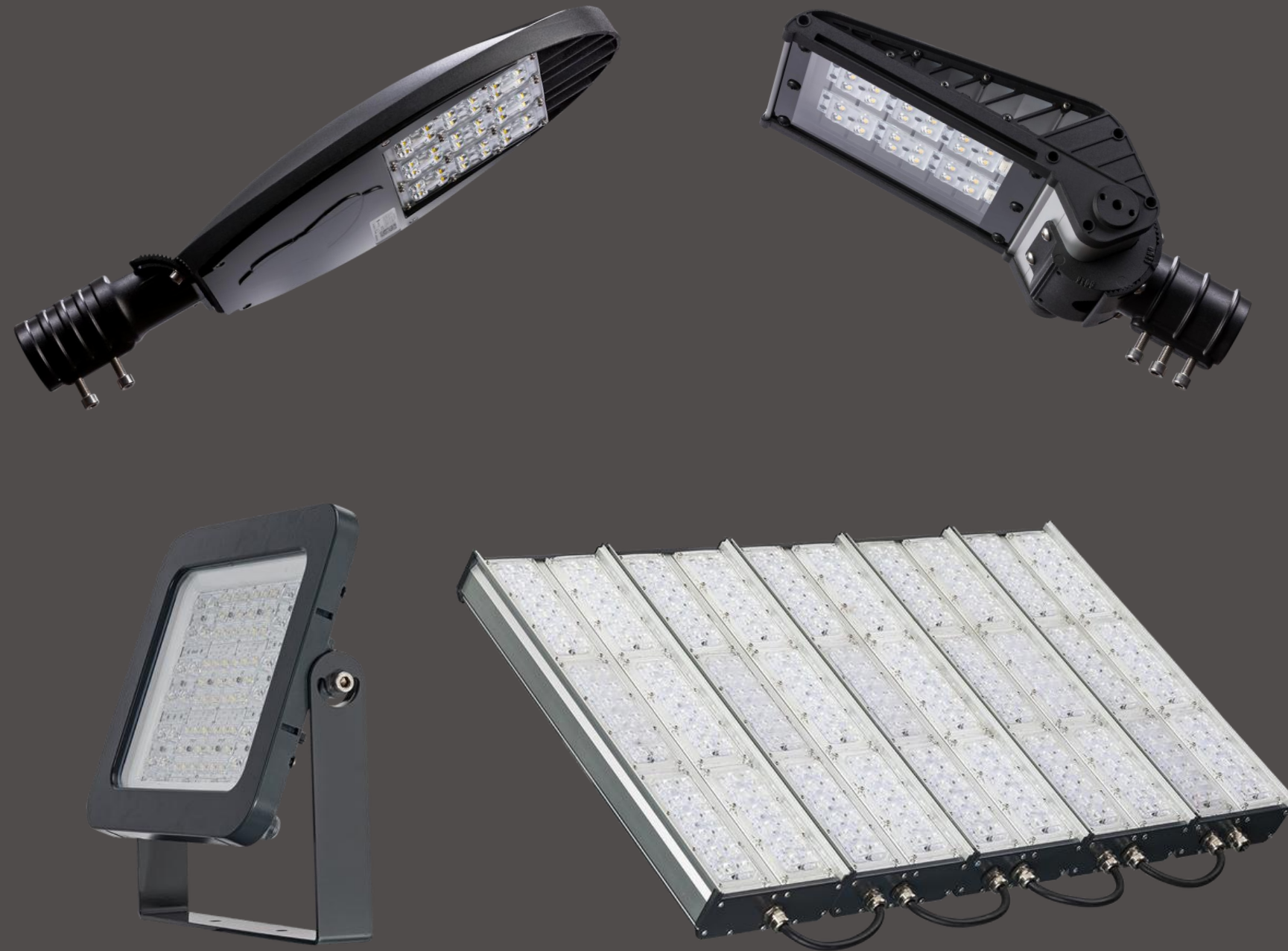
 GRITCON

Innovates for eco-friendly lighting with motion-sensitive technology, increase community spaces with a sustainable, efficient light.

 GRITSOL

Illustrate our stride towards sustainability with advanced solar-powered lighting.

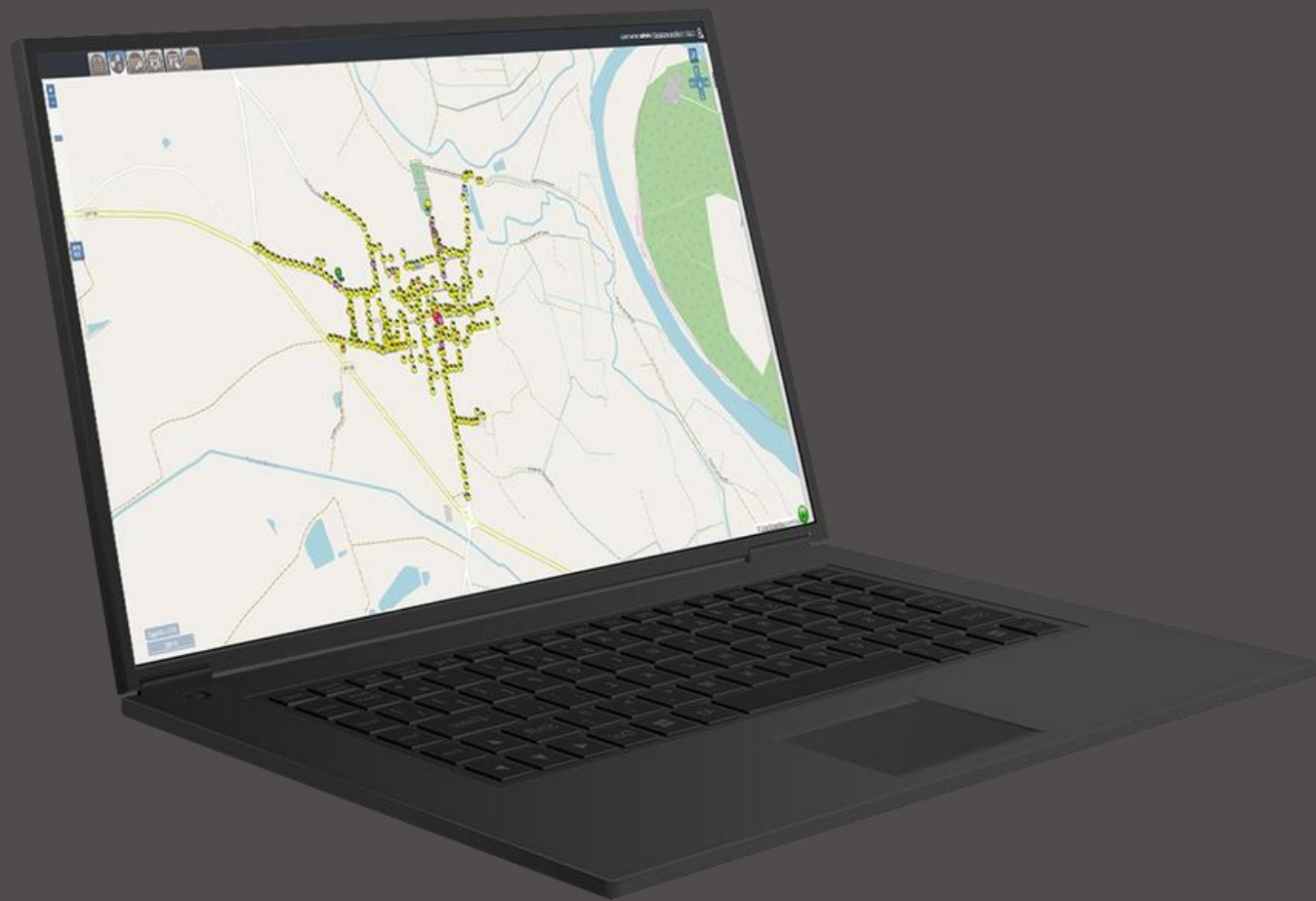
Our Brand Collective



GRITLUX

We provide lighting solutions in a wide range of large-scale projects such as roads, streets, tunnels, industrial areas, and more with our GritLUX brand, where we manufacture LED lighting fixtures.

Our LED modules are designed for a service life of at least 50,000 operating hours. Depending on the ambient temperature, however, these values may be significantly higher.



GRITCON

Through smart control systems, we are facilitating developments suitable for the smart cities of the future.

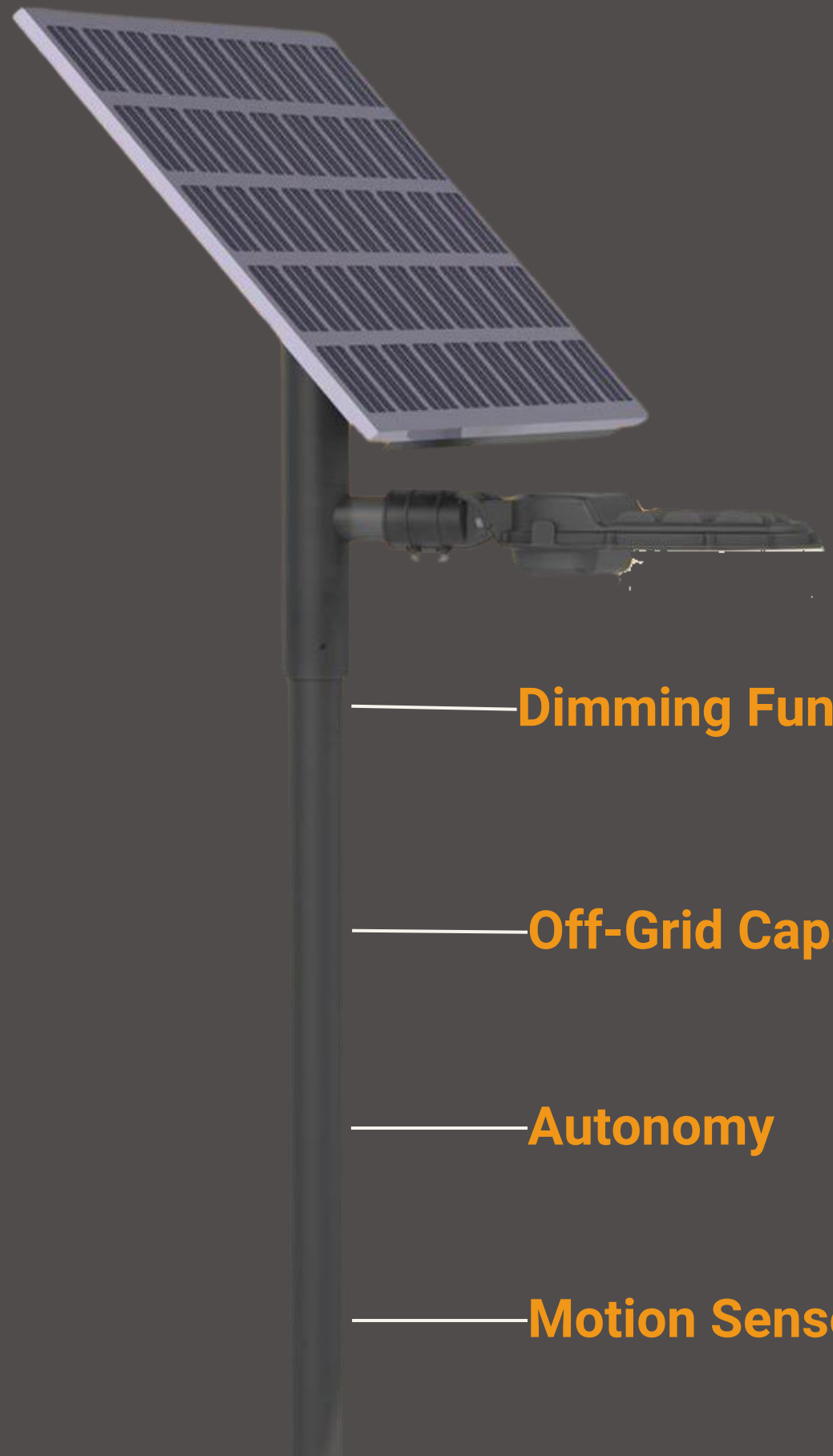
Under the GritCON umbrella, we are developing future projects focused on motion-sensitive systems, microorganisms, and healthier lighting for green spaces, prioritizing energy efficiency.



GRITSOL

Another one of our brands, GritSOL, ensures our adaptation to the rapid evolution where all technology advances for a better future.

With our solar systems applicable to our fixtures, our GritSOL brand continues to grow, providing environmentally conscious, green energy solutions for the future.



— **Dimming Function**

— **Off-Grid Capability**

— **Autonomy**

— **Motion Sensor**

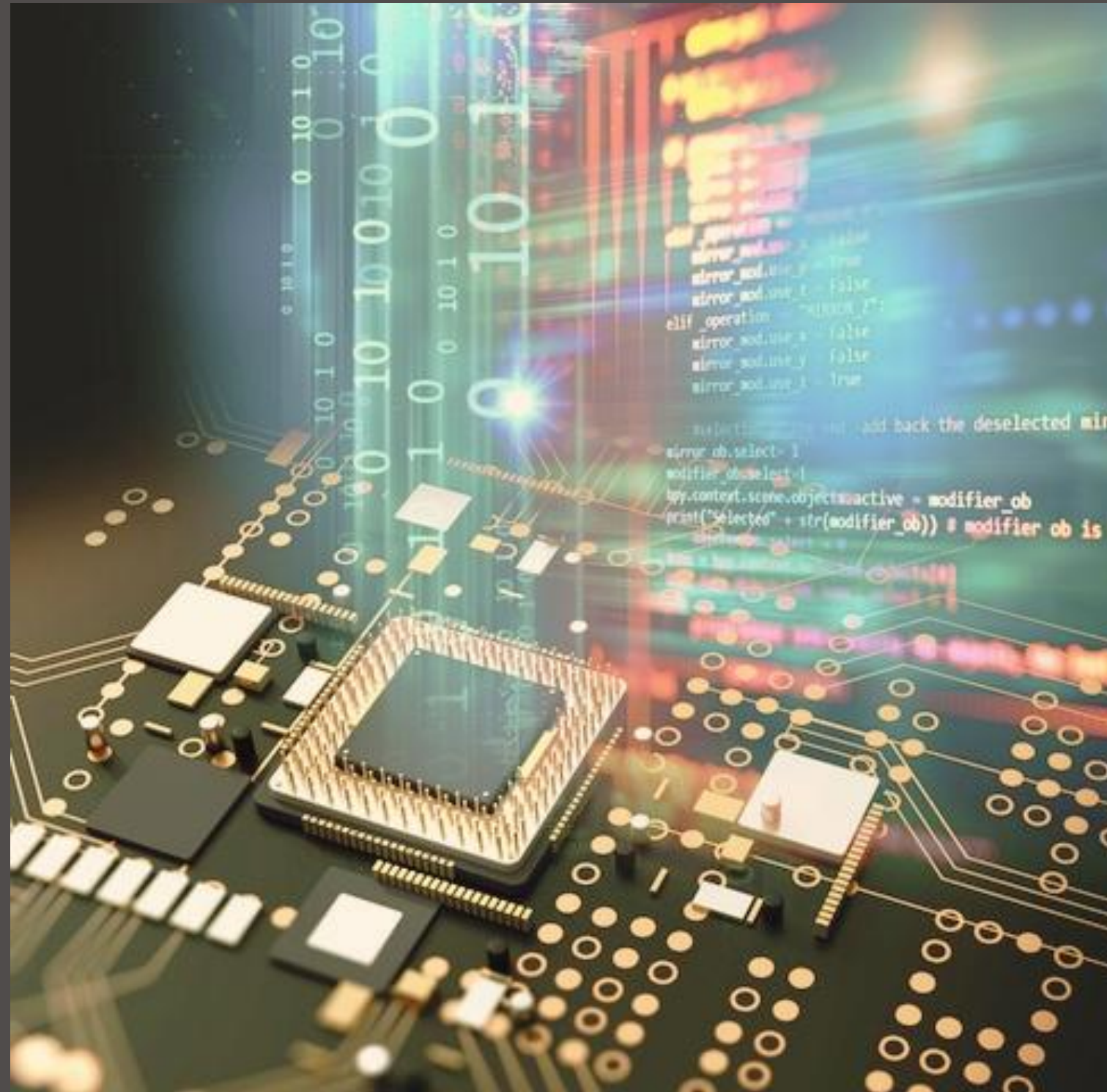
30 W

40 W

60 W

Off-Grid Performance, On-Grid Efficiency

The Shark Neo solar lighting model is designed to deliver reliable, high-performance illumination entirely off-grid by harnessing stored solar energy. It offers the efficiency of grid-powered lighting without dependency on the power network. A custom-designed charge controller maximizes energy storage and ensures optimal usage.



Our R&D Innovations

Grup Imaj's R&D department combines smart systems, eco-friendly approaches, and sustainable designs to bring a fresh perspective to lighting. By integrating software, electronics, communication, optics, and industrial design, we create innovative solutions that lead the way for future cities.

Projects are

Eco-Friendly Lighting Systems



Disaster Communication and
Smart Lighting Systems





Eco-Friendly Lighting Systems

Our eco-friendly lighting project adheres to DarkSky standards and utilizes a system with two different CCT (Correlated Color Temperature) values. Designed to minimize harm to local wildlife, this system is tailored for park and garden applications. With the DALÍ communication protocol, it ensures energy efficiency and ease of control, delivering a sustainable lighting experience.



Disaster Communication and Smart Lighting Systems

This system employs a narrow band communication protocol to transform city lighting into a mesh network, ensuring reliable communication during disasters. By integrating street luminaires and portable devices, the network also supports smart city data analysis, such as weather conditions and traffic data. It provides a cutting-edge solution for both safety and data analytics.



Our VR Project

A virtual reality design has been created on behalf of Grup İmaj to benefit from the advantages of VR technology in conveying our product catalogues and technical information, the application areas of our products, future projects, and the integration of all these elements into our vision to our customers.

Project has...

Our Showroom



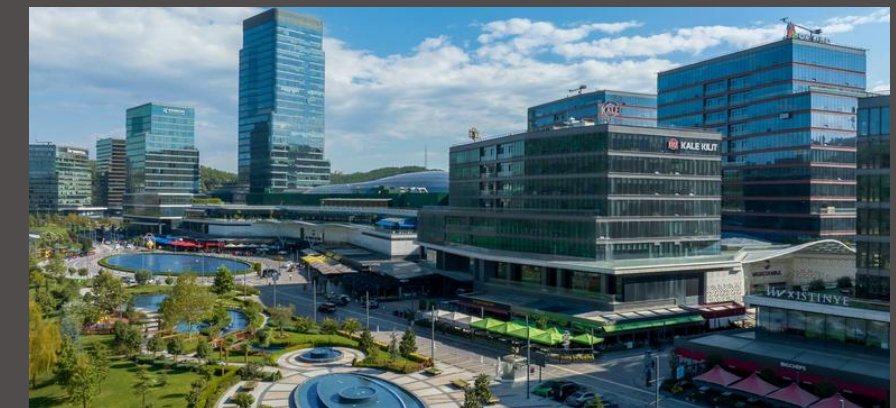
Our LED modules are designed for a service life of at least 50,000 operating hours.

a Glimpse of Future



We showcase a futuristic city illuminated with Grup İmaj's Smart Lighting Technology, demonstrating our vision for future and advancing technology.

More Than Light



With our future technologies, we provide more than just lighting; we also work on lighting products that incorporate communication technologies and environmentally sensitive lighting.



Our Quality

Our quality Assurance is like our compass, ensuring that we never cut corners and always maintain high standards. We're dedicated to constantly tweaking and refining our methods to make sure our products and services are top-notch.

CERTIFICATE
No. 902951
This is to certify that the Quality Management System of the company

GRUP İMAJ AYDINLATMA SANAYİ VE TİCARET A.Ş.
Büyükdere Bölgesi, Fatih Mahallesi, Küçük Sanayi 1. Sokak, No:17 Merkez
11230 Bilecik
TURKEY

has been assessed and found to be in compliance with the Standard
ISO 9001:2015
applicable to
DESIGN AND PRODUCTION OF FLUORESCENT LAMPS BALLASTS, HIGH PRESSURE LAMPS BALLASTS, ELECTRONIC BALLASTS AND DRIVERS, IGNITORS, INTERNAL AND EXTERNAL LUMINAIRES, LED INTERNAL AND EXTERNAL LUMINAIRES AND FLOODLIGHTS, LIGHTING POLES, LIGHTING AUTOMATION, LOW & HIGH VOLTAGE DISTRIBUTION BOXES, HIGH PRESSURE LAMPS, SAFETY AND ISOLATION TRANSFORMERS, MEDIUM VOLTAGE FUSES.

The certificate has been issued under No. 902951 (version 2) for the registration period from 17 May 2024 to 01 February 2025.

Approved by: [Signature]
Printed by: [Signature]

IAF 0-3137
validity code: 2489565-000 V2
Check the validity of this certificate using this code at www.ll-c.net

LL-C (Certification) Czech Republic a.s. | Pohořelky 620/3, 186 00 Praha 8
www.ll-c.net

CERTIFICATE
No. 902951
This is to certify that the Environmental Management System of the company

GRUP İMAJ AYDINLATMA SANAYİ VE TİCARET A.Ş.
Büyükdere Bölgesi, Fatih Mahallesi, Küçük Sanayi 1. Sokak, No:17 Merkez
11230 Bilecik
TURKEY

has been assessed and found to be in compliance with the Standard
ISO 14001:2015
applicable to
DESIGN AND PRODUCTION OF FLUORESCENT LAMPS BALLASTS, HIGH PRESSURE LAMPS BALLASTS, ELECTRONIC BALLASTS AND DRIVERS, IGNITORS, INTERNAL AND EXTERNAL LUMINAIRES, LED INTERNAL AND EXTERNAL LUMINAIRES AND FLOODLIGHTS, LIGHTING POLES, LIGHTING AUTOMATION, LOW & HIGH VOLTAGE DISTRIBUTION BOXES, HIGH PRESSURE LAMPS, SAFETY AND ISOLATION TRANSFORMERS, MEDIUM VOLTAGE FUSES.

The certificate has been issued under No. 902951 (version 2) for the registration period from 17 May 2024 to 01 February 2025.

Approved by: [Signature]
Printed by: [Signature]

IAF 0-3137
validity code: 0460005-F0E V2
Check the validity of this certificate using this code at www.ll-c.net

LL-C (Certification) Czech Republic a.s. | Pohořelky 620/3, 186 00 Praha 8
www.ll-c.net

CERTIFICATE
No. 902951
This is to certify that the Occupational Health and Safety Management System of the company

GRUP İMAJ AYDINLATMA SANAYİ VE TİCARET A.Ş.
Büyükdere Bölgesi, Fatih Mahallesi, Küçük Sanayi 1. Sokak, No:17 Merkez
11230 Bilecik
TURKEY

has been assessed and found to be in compliance with the Standard
ISO 45001:2018
applicable to
DESIGN AND PRODUCTION OF FLUORESCENT LAMPS BALLASTS, HIGH PRESSURE LAMPS BALLASTS, ELECTRONIC BALLASTS AND DRIVERS, IGNITORS, INTERNAL AND EXTERNAL LUMINAIRES, LED INTERNAL AND EXTERNAL LUMINAIRES AND FLOODLIGHTS, LIGHTING POLES, LIGHTING AUTOMATION, LOW & HIGH VOLTAGE DISTRIBUTION BOXES, HIGH PRESSURE LAMPS, SAFETY AND ISOLATION TRANSFORMERS, MEDIUM VOLTAGE FUSES.

The certificate has been issued under No. 902951 (version 2) for the registration period from 17 May 2024 to 01 February 2025.

Approved by: [Signature]
Printed by: [Signature]

IAF 0-3137
validity code: 159F963-F8E V2
Check the validity of this certificate using this code at www.ll-c.net

LL-C (Certification) Czech Republic a.s. | Pohořelky 620/3, 186 00 Praha 8
www.ll-c.net

INTER-NOVA
INTERNATIONAL QUALITY CENTER

CERTIFICATE OF CONFORMITY UYGUNLUK SERTİFİKASI
No: 24INS016
to the Manufacturer: aşağıdaki Üretici için:
GRUP İMAJ AYDINLATMA SANAYİ VE TİCARET A.Ş.
BAYIRKÖY BELDESİ FATİH MAHALLESİ KÜÇÜK SANAYİ SİTESİ 1. SOKAK NO: 17
MERKEZ - BİLECİK - TÜRKİYE

Product and designation of type: Ürün ve belirtilen tipleri:
LED LUMINAIRES FOR ROAD AND STREET LIGHTING (GRITLUX branded) LED CADDE - SOKAK YOL AYDINLATMA ARMATÜRLERİ (GRITLUX markalı)
Types & Series: Tipler & Seriler:
WOLF MINI R 15- WOLF MINI R 30- WOLF MİDİ R 50- WOLF MİDİ R 75- WOLF BASE R 100- WOLF MEGA R 200
WOLF MAXI R 150- WOLF MAXI R 175- WOLF MEGA R 200- WOLF MEGA R 220- WOLF MEGA R 240
TURTLE ECO 15- TURTLE ECO 30- TURTLE ECO 50- TURTLE ECO 75- TURTLE ECO 100- TURTLE ECO 120
TURTLE 15- TURTLE 30- TURTLE 50- TURTLE 75- TURTLE 100- TURTLE 120
SHARK NED 15- SHARK NED 30- SHARK NED 50- SHARK NED 75- SHARK NED 100- SHARK NED 120- SHARK NED 150
SHARK ECO 15- SHARK ECO 30- SHARK ECO 50- SHARK ECO 75- SHARK ECO 100- SHARK ECO 120- SHARK ECO 150
LUMPERIA 15- LUMPERIA 30- LUMPERIA 50- LUMPERIA 75- LUMPERIA 100- LUMPERIA 110- LUMPERIA 120
LUMPERIA 150- LUMPERIA 175- LUMPERIA 200
FOX 15- FOX 30- FOX 50- FOX 75- FOX 100- FOX 120- FOX 150- FOX 175

The sample tested is covered by the following EU-directives: Test edilen numune, aşağıdaki yönetmelikler kapsamındadır:
2014/35/EU Low Voltage Directive
Belirli Gerilim Sınırları İçin Tasarlanan Elektrikli Ekipman ile İlgili Yönetmelik 2014/35/AB
2014/30/EU Electromagnetic Compatibility
Elektromanyetik Uyumluluk Yönetmeliği 2014/30/AB
Observing all EU-Directives relevant for the product, the CE-mark can be labelled
Buğün için geçerli olan ürüne ait yönetmelikler esas alındığında, ürünler üzerinde CE işareti kullanılabilir

Issue Date/ Yayımlanma Tarihi: 28.05.2024
Expiry Date/ Bitiş Tarihi: 02.02.2025

AKADEMİ BELGELENDİRME
Metin ŞİMSİT
AKADEMİ BELGELENDİRME GÖZETİM EĞİTİM HİZMETLERİ TİC. LTD. ŞTİ.
ABDURRAHMANGAZİ MAH. BEYOĞ. SK. NO:59 Sarıcaşın - İSTANBUL / TÜRKİYE Tel: 0 (212) 798 28 52 www.a-bolge.com

INTER-NOVA
INTERNATIONAL QUALITY CENTER

CERTIFICATE OF CONFORMITY UYGUNLUK SERTİFİKASI
No: 24INS004
to the Manufacturer: aşağıdaki Üretici için:
GRUP İMAJ AYDINLATMA SANAYİ VE TİCARET A.Ş.
BAYIRKÖY BELDESİ FATİH MAHALLESİ KÜÇÜK SANAYİ SİTESİ 1. SOKAK NO: 17
MERKEZ - BİLECİK - TÜRKİYE

Product and designation of type: Ürün ve belirtilen tipleri:
ELECTRIC DISTRIBUTION PANELS (SYMETRY branded) ELEKTRİK DAĞITIM PANOLARI (SYMETRY markalı)
Types & Series: Tipler & Seriler:
PAN 20X30X13; PAN 22X30X17; PAN 25X30X16; PAN 25X30X17; PAN 30X40X17
PAN 35X50X17; PAN 40X60X20; PAN 50X70X22; PAN 60X80X22; PAN 75X100X35

The sample tested is covered by the following EU-directives: Test edilen numune, aşağıdaki yönetmelikler kapsamındadır:
2014/35/EU Low Voltage Directive
Belirli Gerilim Sınırları İçin Tasarlanan Elektrikli Ekipman ile İlgili Yönetmelik 2014/35/AB
Observing all EU-Directives relevant for the product, the CE-mark can be labelled
Buğün için geçerli olan ürüne ait yönetmelikler esas alındığında, ürünler üzerinde CE işareti kullanılabilir

Issue Date/ Yayımlanma Tarihi: 28.05.2024
Expiry Date/ Bitiş Tarihi: 02.02.2025

AKADEMİ BELGELENDİRME
Metin ŞİMSİT
AKADEMİ BELGELENDİRME GÖZETİM EĞİTİM HİZMETLERİ TİC. LTD. ŞTİ.
ABDURRAHMANGAZİ MAH. BEYOĞ. SK. NO:59 Sarıcaşın - İSTANBUL / TÜRKİYE Tel: 0 (212) 798 28 52 www.a-bolge.com

INTER-NOVA
INTERNATIONAL QUALITY CENTER

CERTIFICATE OF CONFORMITY UYGUNLUK SERTİFİKASI
No: 24INS001
to the Manufacturer: aşağıdaki Üretici için:
GRUP İMAJ AYDINLATMA SANAYİ VE TİCARET A.Ş.
BAYIRKÖY BELDESİ FATİH MAHALLESİ KÜÇÜK SANAYİ SİTESİ 1. SOKAK NO: 17
MERKEZ - BİLECİK - TÜRKİYE

Product and designation of type: Ürün ve belirtilen tipleri:
LUMINAIRES FOR ROAD AND STREET LIGHTING (SYMETRY POINT branded) CADDE - SOKAK YOL AYDINLATMA ARMATÜRLERİ (SYMETRY POINT markalı)
Types & Series: Tipler & Seriler:
TS MODEL - TS01 MODEL - TS02 MODEL - TS03 MODEL - TP MODEL - TP01 MODEL - TP02 MODEL
TP03 MODEL - CS MODEL - CP MODEL - CSY MODEL - CPY MODEL - HP MODEL - MP MODEL
MS MODEL - AS MODEL - NS MODEL
YÜKSEK BASINÇLI SODYUM, METAL HALİDE VE CİVA BUHARLI LAMBALARLA KULLANILAN
The sample tested is covered by the following EU-directives: Test edilen numune, aşağıdaki yönetmelikler kapsamındadır:
2014/35/EU Low Voltage Directive
Belirli Gerilim Sınırları İçin Tasarlanan Elektrikli Ekipman ile İlgili Yönetmelik 2014/35/AB
Observing all EU-Directives relevant for the product, the CE-mark can be labelled
Buğün için geçerli olan ürüne ait yönetmelikler esas alındığında, ürünler üzerinde CE işareti kullanılabilir

Issue Date/ Yayımlanma Tarihi: 28.05.2024
Expiry Date/ Bitiş Tarihi: 02.02.2025

AKADEMİ BELGELENDİRME
Metin ŞİMSİT
AKADEMİ BELGELENDİRME GÖZETİM EĞİTİM HİZMETLERİ TİC. LTD. ŞTİ.
ABDURRAHMANGAZİ MAH. BEYOĞ. SK. NO:59 Sarıcaşın - İSTANBUL / TÜRKİYE Tel: 0 (212) 798 28 52 www.a-bolge.com

INTER-NOVA
INTERNATIONAL QUALITY CENTER

CERTIFICATE OF CONFORMITY UYGUNLUK SERTİFİKASI
No: 24INS014
to the Manufacturer: aşağıdaki Üretici için:
GRUP İMAJ AYDINLATMA SANAYİ VE TİCARET A.Ş.
BAYIRKÖY BELDESİ FATİH MAHALLESİ KÜÇÜK SANAYİ SİTESİ 1. SOKAK NO: 17
MERKEZ - BİLECİK - TÜRKİYE

Product and designation of type: Ürün ve belirtilen tipleri:
STARTING DEVICES (IGNITORS) (İMAJ branded) YOLVERME CİHAZLARI (ATEŞLEYİCİLER) (İMAJ markalı)
Types & Series: Tipler & Seriler:
IM03 Serisi 35-70 W Zaman Ayarlı Olmayan Ateşleyiciler (Ignitors Without Timer)
IM03 T Serisi 35-70 W 5-10-15-20 Dakika Zaman Ayarlı Ateşleyiciler (Ignitors With Timer)
IM04 Serisi 100-400 W Zaman Ayarlı Olmayan Ateşleyiciler (Ignitors Without Timer)
IM04 T Serisi 100-400 W 5-10-15-20 Dakika Zaman Ayarlı Ateşleyiciler (Ignitors With Timer)
IM04 Serisi 35-400 W Zaman Ayarlı Olmayan Ateşleyiciler (Ignitors Without Timer)
IM04 T Serisi 35-400 W 5-10-15-20 Dakika Zaman Ayarlı Ateşleyiciler (Ignitors With Timer)

The sample tested is covered by the following EU-directives: Test edilen numune, aşağıdaki yönetmelikler kapsamındadır:
2014/35/EU Low Voltage Directive
Belirli Gerilim Sınırları İçin Tasarlanan Elektrikli Ekipman ile İlgili Yönetmelik 2014/35/AB
Observing all EU-Directives relevant for the product, the CE-mark can be labelled
Buğün için geçerli olan ürüne ait yönetmelikler esas alındığında, ürünler üzerinde CE işareti kullanılabilir

Issue Date/ Yayımlanma Tarihi: 28.05.2024
Expiry Date/ Bitiş Tarihi: 02.02.2025

AKADEMİ BELGELENDİRME
Metin ŞİMSİT
AKADEMİ BELGELENDİRME GÖZETİM EĞİTİM HİZMETLERİ TİC. LTD. ŞTİ.
ABDURRAHMANGAZİ MAH. BEYOĞ. SK. NO:59 Sarıcaşın - İSTANBUL / TÜRKİYE Tel: 0 (212) 798 28 52 www.a-bolge.com

INTER-NOVA
INTERNATIONAL QUALITY CENTER

CERTIFICATE OF CONFORMITY UYGUNLUK SERTİFİKASI
No: 24INS002
to the Manufacturer: aşağıdaki Üretici için:
GRUP İMAJ AYDINLATMA SANAYİ VE TİCARET A.Ş.
BAYIRKÖY BELDESİ FATİH MAHALLESİ KÜÇÜK SANAYİ SİTESİ 1. SOKAK NO: 17
MERKEZ - BİLECİK - TÜRKİYE

Product and designation of type: Ürün ve belirtilen tipleri:
LINEAR AND COMPACT BALLASTS FOR FLUORESCENT LAMPS (İMAJ branded) LİNEER VE KOMPAKT FLORESAN LAMBA BALASTLARI (İMAJ markalı)
Types & Series: Tipler & Seriler:
IFB 7, IFB 9, IFB 11, IFB 15, IFB 20, IFB 32, IFB 40, IFB 58

The sample tested is covered by the following EU-directives: Test edilen numune, aşağıdaki yönetmelikler kapsamındadır:
2014/35/EU Low Voltage Directive
Belirli Gerilim Sınırları İçin Tasarlanan Elektrikli Ekipman ile İlgili Yönetmelik 2014/35/AB
Observing all EU-Directives relevant for the product, the CE-mark can be labelled
Buğün için geçerli olan ürüne ait yönetmelikler esas alındığında, ürünler üzerinde CE işareti kullanılabilir

Issue Date/ Yayımlanma Tarihi: 28.05.2024
Expiry Date/ Bitiş Tarihi: 02.02.2025

AKADEMİ BELGELENDİRME
Metin ŞİMSİT
AKADEMİ BELGELENDİRME GÖZETİM EĞİTİM HİZMETLERİ TİC. LTD. ŞTİ.
ABDURRAHMANGAZİ MAH. BEYOĞ. SK. NO:59 Sarıcaşın - İSTANBUL / TÜRKİYE Tel: 0 (212) 798 28 52 www.a-bolge.com

INTER-NOVA
INTERNATIONAL QUALITY CENTER

CERTIFICATE OF CONFORMITY UYGUNLUK SERTİFİKASI
No: 24INS003
to the Manufacturer: aşağıdaki Üretici için:
GRUP İMAJ AYDINLATMA SANAYİ VE TİCARET A.Ş.
BAYIRKÖY BELDESİ FATİH MAHALLESİ KÜÇÜK SANAYİ SİTESİ 1. SOKAK NO: 17
MERKEZ - BİLECİK - TÜRKİYE

Product and designation of type: Ürün ve belirtilen tipleri:
BALLASTS FOR HIGH PRESSURE LAMPS (İMAJ branded) YÜKSEK BASINÇLI LAMBA BALASTLARI (İMAJ markalı)
Types & Series: Tipler & Seriler:
SV MODELİ YÜKSEK BASINÇLI SODYUM BUHARLI LAMBALARLA KULLANILAN BALASTLAR
MH MODELİ YÜKSEK BASINÇLI METAL HALİDE LAMBALARLA KULLANILAN BALASTLAR
HG MODELİ YÜKSEK BASINÇLI CİVA BUHARLI LAMBALARLA KULLANILAN BALASTLAR

The sample tested is covered by the following EU-directives: Test edilen numune, aşağıdaki yönetmelikler kapsamındadır:
2014/35/EU Low Voltage Directive
Belirli Gerilim Sınırları İçin Tasarlanan Elektrikli Ekipman ile İlgili Yönetmelik 2014/35/AB
Observing all EU-Directives relevant for the product, the CE-mark can be labelled
Buğün için geçerli olan ürüne ait yönetmelikler esas alındığında, ürünler üzerinde CE işareti kullanılabilir

Issue Date/ Yayımlanma Tarihi: 28.05.2024
Expiry Date/ Bitiş Tarihi: 02.02.2025

AKADEMİ BELGELENDİRME
Metin ŞİMSİT
AKADEMİ BELGELENDİRME GÖZETİM EĞİTİM HİZMETLERİ TİC. LTD. ŞTİ.
ABDURRAHMANGAZİ MAH. BEYOĞ. SK. NO:59 Sarıcaşın - İSTANBUL / TÜRKİYE Tel: 0 (212) 798 28 52 www.a-bolge.com

INTER-NOVA
INTERNATIONAL QUALITY CENTER

CERTIFICATE OF CONFORMITY UYGUNLUK SERTİFİKASI
No: 24INS030
to the Manufacturer: aşağıdaki Üretici için:
GRUP İMAJ AYDINLATMA SANAYİ VE TİCARET A.Ş.
BAYIRKÖY BELDESİ FATİH MAHALLESİ KÜÇÜK SANAYİ SİTESİ 1. SOKAK NO: 17
MERKEZ - BİLECİK - TÜRKİYE

Product and designation of type: Ürün ve belirtilen tipleri:
FLOODLIGHTS (GRITLUX branded) PROJELTÖRLER (GRITLUX markalı)
Types & Series: Tipler & Seriler:
MODULOCK HEXA F 800, MODULOCK HEXA F 800, MODULOCK HEXA F 800, MODULOCK PENTA 750, MODULOCK PENTA 700,
MODULOCK TETRA 800, MODULOCK TETRA 550, MODULOCK TETRA 500, MODULOCK TRIO 450, MODULOCK TRIO 400,
MODULOCK DUO 300, MODULOCK DUO 240, MODULOCK DUO 200, MODULOCK DUO 180, MODULOCK DUO 175, MODULOCK
MONO 150, MODULOCK MONO 120, MODULOCK MONO 110, MODULOCK MONO 100, MODULOCK MONO 75, MODULOCK MONO
50, MODULOCK MONO 30, MODULOCK MONO 15
SHARK ECO F 120, SHARK ECO F 100, SHARK ECO F 50, SHARK ECO F 30, SHARK ECO F 15, SHARK NED F 150,
SHARK NED F 120, SHARK NED F 100, SHARK NED F 75, SHARK NED F 50, SHARK NED F 30, SHARK NED F 15
LUMPERIA F 200, LUMPERIA F 175, LUMPERIA F 150, LUMPERIA F 120, LUMPERIA F 100, LUMPERIA F 50,
LUMPERIA F 30, LUMPERIA F 15
WOLF MEGA 240, WOLF MEGA 220, WOLF MEGA 200, WOLF MEGA 175, WOLF MEGA 150, WOLF BASE 120, WOLF BASE 100, WOLF
MIDI 75, WOLF MIDI 50, WOLF MINI 30, WOLF MINI 15
HAWK TITAN 800, HAWK TITAN 700, HAWK TITAN 600, HAWK ULTRA 800, HAWK ULTRA 500, HAWK ULTRA
500, HAWK MEGA 400, HAWK MEGA 300, HAWK MEGA 200, HAWK MEGA 150, HAWK MEGA 100, HAWK MEGA 50,
HAWK BASE 175, HAWK BASE 150, HAWK BASE 120, HAWK BASE 100, HAWK LINE 100, HAWK LINE 75, HAWK LINE 50, HAWK
MIDI 75, HAWK MIDI 50, HAWK MINI 30, HAWK MINI 15

The sample tested is covered by the following EU-directives: Test edilen numune, aşağıdaki yönetmelikler kapsamındadır:
2014/35/EU Low Voltage Directive
Belirli Gerilim Sınırları İçin Tasarlanan Elektrikli Ekipman ile İlgili Yönetmelik 2014/35/AB
Observing all EU-Directives relevant for the product, the CE-mark can be labelled
Buğün için geçerli olan ürüne ait yönetmelikler esas alındığında, ürünler üzerinde CE işareti kullanılabilir

Issue Date/ Yayımlanma Tarihi: 28.05.2024
Expiry Date/ Bitiş Tarihi: 11.04.2025

AKADEMİ BELGELENDİRME
Metin ŞİMSİT
AKADEMİ BELGELENDİRME GÖZETİM EĞİTİM HİZMETLERİ TİC. LTD. ŞTİ.
ABDURRAHMANGAZİ MAH. BEYOĞ. SK. NO:59 Sarıcaşın - İSTANBUL / TÜRKİYE Tel: 0 (212) 798 28 52 www.a-bolge.com



Our Key References

Every project is proof of our commitment to innovation, excellence, and transforming spaces with light. Together, let's illuminate the world and create experiences that inspire.

Business Case

Istanbul Airport

Light it Up!

In this mega project, we were excited to supply 10,000 units of lighting fixtures for roads, perimeters, aprons, and tunnels. Our advanced solutions played a crucial role in illuminating the vast spaces of this world-class airport, guaranteeing safety, smooth operations, and a welcoming ambiance for travelers from worldwide.



Business Case

Kuwait International Airport

Light it Up!

The Kuwait International Airport, where more than 13 million passengers are hosted every year, is illuminated with Grup Imaj.



Business Case

Rte De Bouake, Ivory Coast

Light it Up!



This is the signature road project at Ivory Coast has been lightened up with high quality LED fixtures, in the project 4000 pcs has been used.

Business Case

Dakar Roads, Senegal

Light it Up!



Magnificent project has been released together with World's biggest construction company VINCI.

Business Case

Dakar Roads, Senegal

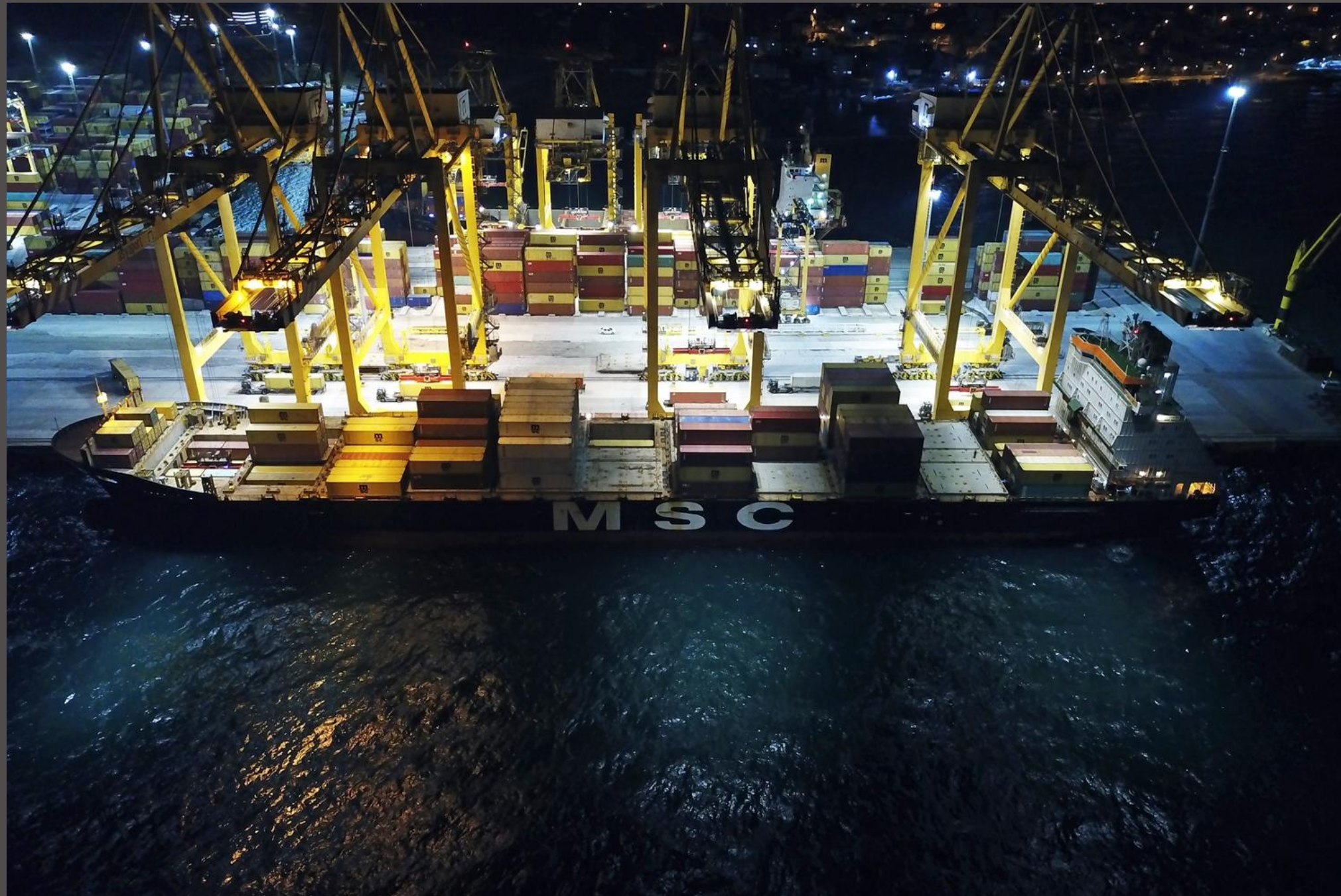
Light it Up!



Magnificent project has been released together with World's biggest construction company VINCI.

Business Case

Asyaport, Turkey



Light it Up!

5th biggest seaport and Trade hub of Turkey
enlightened with proud.

Business Case

East and South Coastal Roads, Turkey

Light it Up!



Antalya Side road at the left and Erzurum Bayburt road at the right and many of the roads of Turkey almost 40% of the roads lightened by us together with electricity distribution companies and Directorate of Highways.

Gas Stations



Light it Up!

Gas Stations and Environments

Lighting for gas stations requires high bay principle usage for highly ventilated areas not requires exproof lighting. Canopy ceiling is most commonly used one and we are using our high performance floodlights to ensure about the requirements that 400 lux should be given at the bottom of canopy, 150 lux to the pumps and 10 lux at the enterence and exit areas of the stations. Market and surrondings should have 30 lux level that brings safe, inviting environment and helps visitors to spent more time and shopping.

Business Case

Gas Stations

Light it Up!

Gas Stations and Environments

Lighting for gas stations also important for the people at long haul drives that most of the Street lights are 2700K (warm white-yellowish) or light with reflectors only. For the eye comfort and awakensness 4000K (close to daylight) at highways and 6500K (signal white) at urban stations are most proper usage. For the environments again high quality Street lighting fixtures recommended to use. As per station location we are offering the best possible solutions with our lighting design team.



Thank You.

Marmara Mahallesi, Hürriyet Bulvarı 100 A | 34524
Beylikdüzü / İstanbul / TURKEY

Visit Our Website

